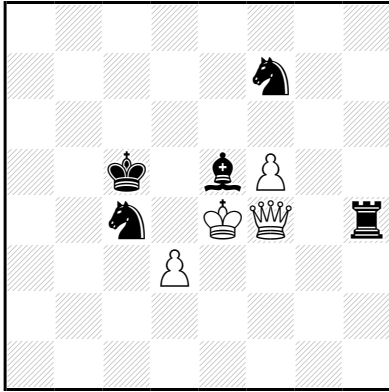


## Follow-the-leader

Zwart moet, indien mogelijk, spelen naar het zojuist door Wit verlaten veld.

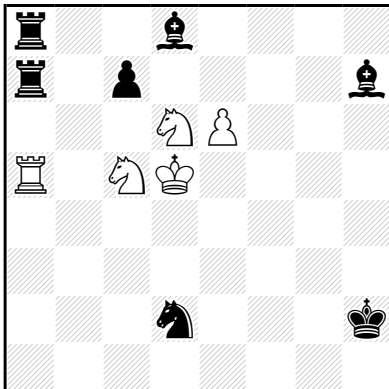
### Erich BARTEL Feenschach 1970 3° Recommandé



s#6 (4+5) C+  
Follow-the-leader

**1.Dg4!** Lf4 2.Dg7 Tg4 3.Dh7 Tg7 4.Dh4 Th7 5.Dg5 Th4 6.Dxf4 Pg5‡

### Heinz ZANDER feenschach 1971



s#5 (5+7) C+  
Follow-the-leader

**1.Pd7!** c5 2.Pf6 Td7 3.Pfe4 Lf6 4.Ta2 Ta5 5.Pxc5 Le4‡