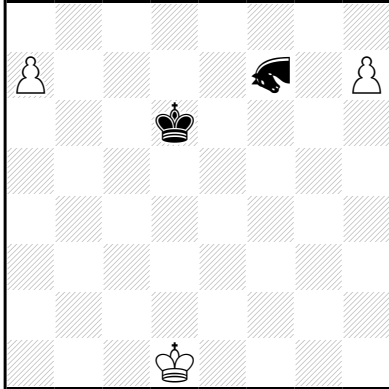


Giraffe

Een (1,4)-springer

Roméo BEDONI La Clé 1970



h#2 (3+2) C+

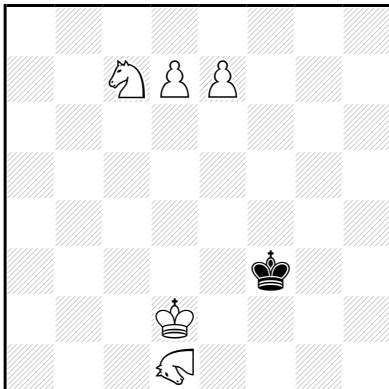
b) ♞f7→ç7

♞=Giraffe

a) 1.Ke7 a8=Giraffe + 2.Kf8 h8=D‡

b) 1.Kd7 h8=Giraffe + 2.Kc8 a8=D‡

Theodor STEUDEL Problemkiste 2008



h#2 (5+1) C+

♞=Giraffe

1.Ke4 d8=Giraffe + 2.Kd4 e8=Giraffe ‡