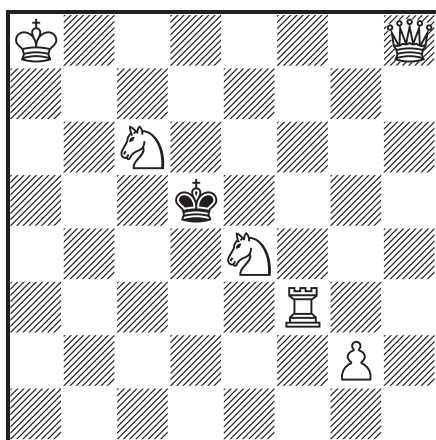


OPEN DUTCH SOLVING CHAMPIONSHIPS 2022 B-GROUP

NAME:

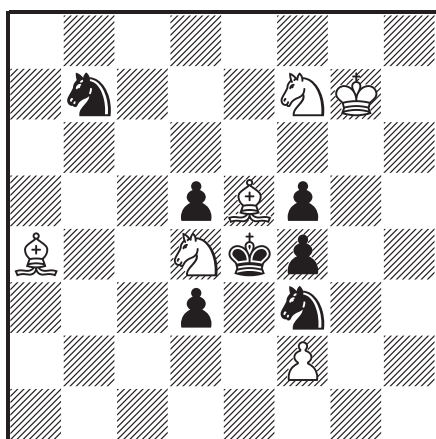
— N° 1 —



#2

6+1

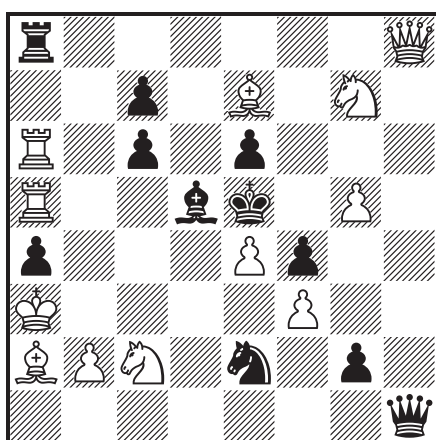
— N° 2 —



#2

6+7

— N° 3 —



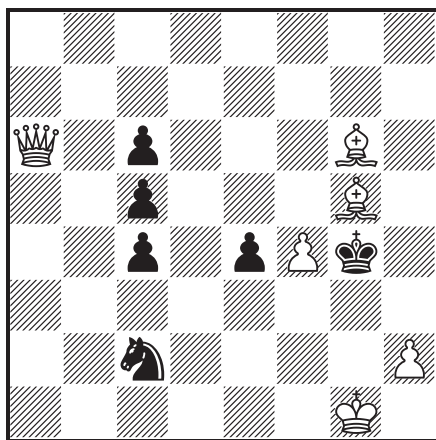
#2

12+11

OPEN DUTCH SOLVING CHAMPIONSHIPS 2022 B-GROUP

NAME:

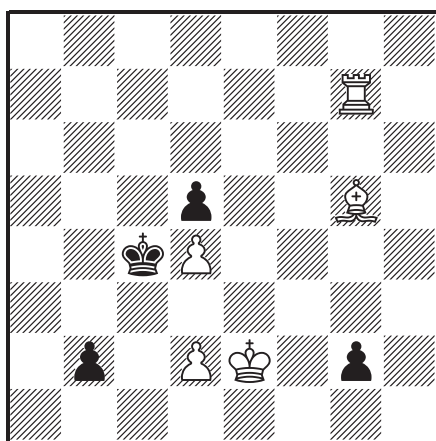
— N° 4 —



#3

6+6

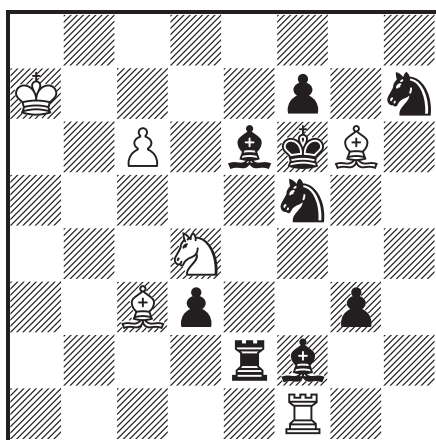
— N° 5 —



+

5+4

— N° 6 —



H#2

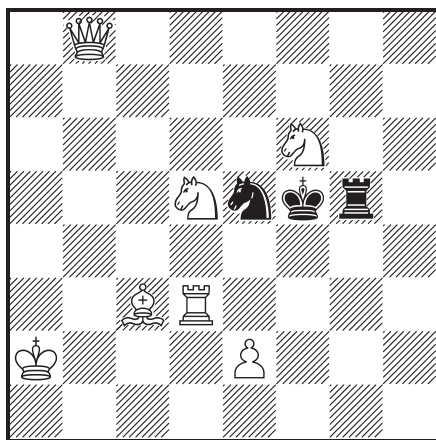
2 sol.

6+9

OPEN DUTCH SOLVING CHAMPIONSHIPS 2022 B-GROUP

NAME:

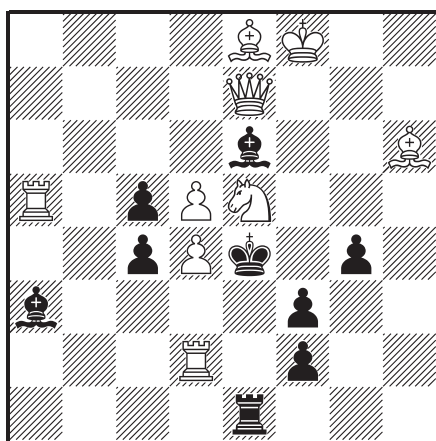
— N° 7 —



#2

7+3

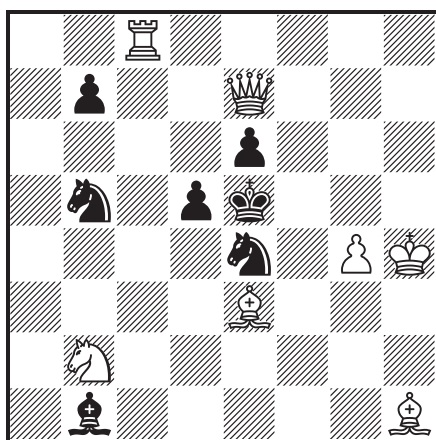
— N° 8 —



#2

9+9

— N° 9 —



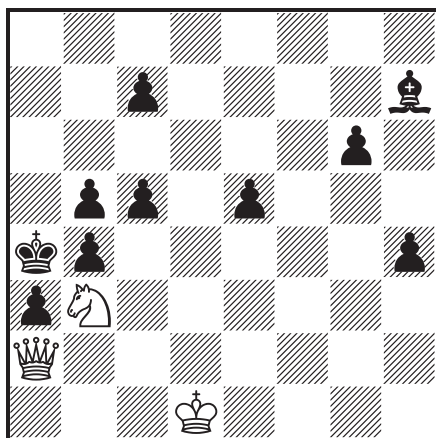
#3

7+7

OPEN DUTCH SOLVING CHAMPIONSHIPS 2022 B-GROUP

NAME:

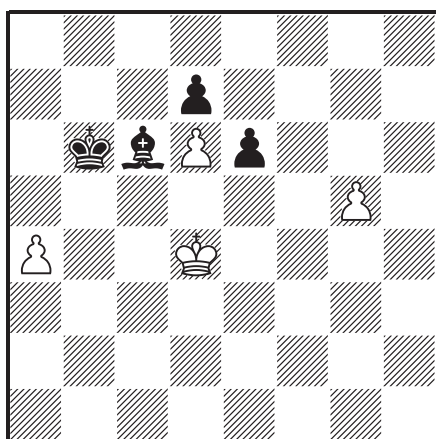
— N° 10 —



#4

3+10

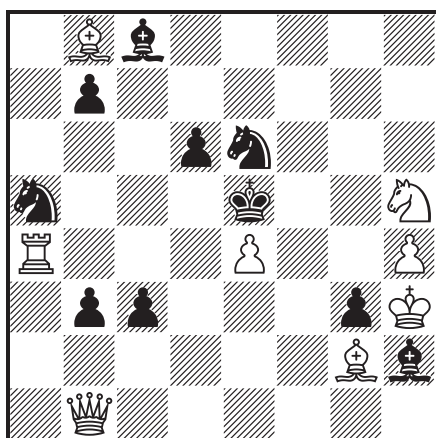
— N° 11 —



=

4+4

— N° 12 —



S#2

8+10