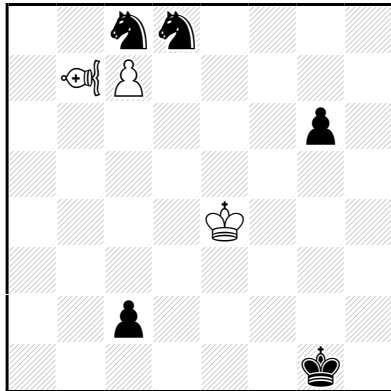


Biljartende loper

Gerard BOUMA
Probleemblad 2008



h#2 (3+5) C+

b) ♖b7→d2

c) ♜g6→d2

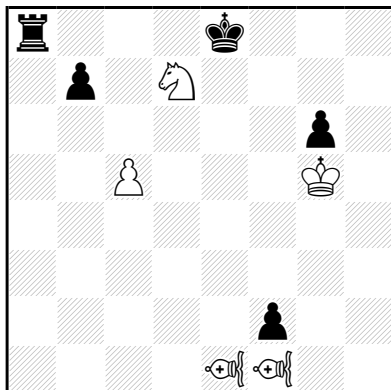
♞ = Biljartende loper

a) 1.Kf2 BLg4 2.Ke1 c×d8=BL‡

b) 1.Pb6 LBL×b6+ 2.Kf1 c8=BL‡

c) 1.Pc6 Kf5 2.Pb8 c×b8=BL‡

Gaspar J. PERRONE
Problemkiste 2005



sh#3 (5+5) C+

♞ = Biljartende loper

1.f×e1=L 2.0-0-0 3.b5 c×b6 e.p.‡