

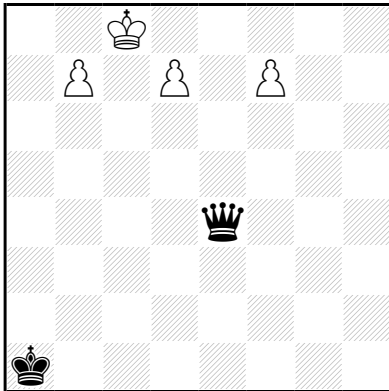
Dubbele Maximummer:

Zwart én Wit moeten steeds hun geometrisch langste zet doen. Zie bijgaand tabel:

MAXIMUMMERS Table of Relative Values

23	24	26	27	29	31	32	33	8
18	19	20	22	25	28	30		7
13	14	15	17	21	24			6
9	10	12	13	16				5
6	7	8	11					4
3	4	5						3
1	2							2
								1
a	b	c	d	e	f	g	h	

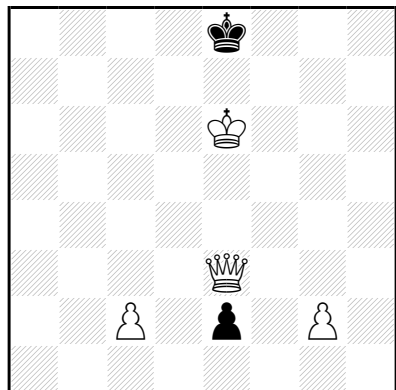
Albert H. KNIEST Feenschach 1967



h#3 (4+2) C+
Dubbele Maximummer

1.Dh1 b8=T 2.Da8 f8=D 3.Dh1 Da3‡

Albert H. KNIEST
139° T.T. Die Schwalbe 1965-66
2° Recommandé



h#3 (4+2) C+

2.1.1...

Dubbele Maximummee

1.e1P Da7 2.P×g2 Dg1 3.Pe3 Dg8‡

1.e1T De5 2.Ta1 D×a1 3.Kf8 Dh8‡