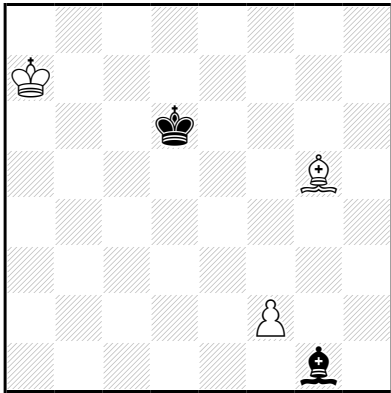


Monochrome schaak: Elke zet van een wit naar zwart veld (of vice versa) is illegaal.

Zdenek ZACH
Sachová skladba 2018



h≠2 duplex (3+2) C+

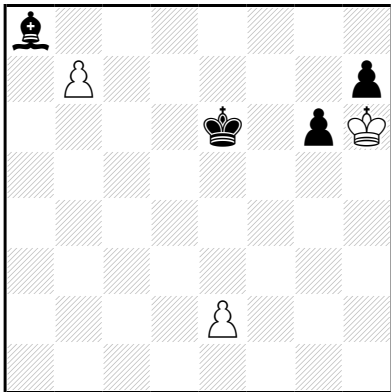
2.1.1.1

Monochrome schaak

1.Ke5 Kb6 2.Kd4 Lf6‡/ 1.Kc5 f4 2.Ld4 Le7‡

1.Le3 Kc7 2.f4 L×e3‡/ 1.Lf4+ Ke7 2.Lb8 L×f2‡

Enzo MINERVA
Antonio GAROFALO
The Problemist 2005



h≠2 (3+4) C+

2.1.1.1

b) h=2

Monochrome schaak

a)

1.Kf5 b×a8=D 2.Kg4 Df3‡

1.Kf7 b×a8=L 2.Kg8 Ld5‡

b)

1.Kd7 b×a8=L 2.Kç8 Lc6=

1.Kd5 b×a8=D+ 2.Kc4 Db7=